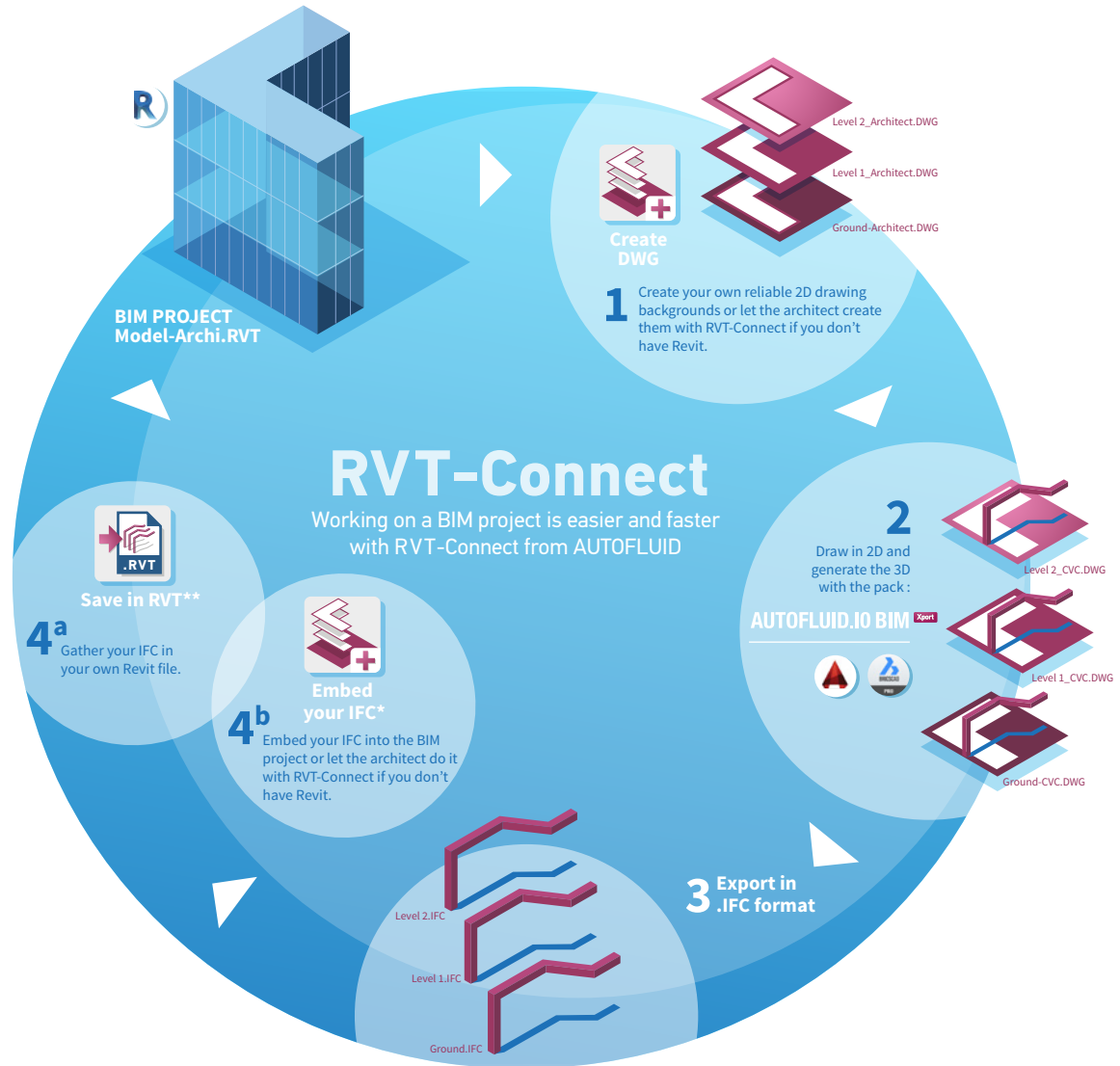


Choose simplicity for your BIM projects

RVT-Connect brings together the best set of tools to integrate AUTOFLUID networks into 3D models. Each step is optimised to make you as efficient in 3D in your BIM projects as in 2D.

The ecosystem of RVT-Connect

RVT-Connect is a plug-in for REVIT that makes it easy for collaborators on a same BIM project to feed networks that were created using AUTOFLUID, into the 3D model. Now you can generate accurate drawing backgrounds and create 3D networks quickly, with AUTOFLUID's high level of precision and without any REVIT training.



*IFC in IFC2X3 format (CSTB) featuring interference check and bill of materials. **.RVT format networks not structured in systems.

The tools of the RVT-Connect ribbon



Import CAD

Import 3D networks in DWG format. These networks will be treated as non-editable «blocks».



Create DWG

Generate 2D drawing backgrounds from the 3D model. This command lists all the views and levels for easy selection.



Text

Create texts from the data contained in each object of the IFC network.



Link CAD

Embed 3D networks in DWG format as «external reference» into your BIM model. They will be updated whenever the DWG file is modified.



Floors Properties

Manage the list of all the levels in the model to easily find each floor and their properties.



Schedule Quantities

Generate detailed bills of materials from your IFC networks.



Link IFC

Embed 3D networks in IFC format as «external reference» into your BIM model. They will be updated whenever the IFC file is modified.



Embed IFC

Once the design of your 2D drawings and the modelling of your networks in your CAD package are finished, they can be exported in IFC format. They will be positioned automatically in the right place and height.



Interference check

Check interferences between your AUTOFLUID IFC networks and every other object in the mock up.



Link Revit

Embed 3D networks in RVT format as «external reference» into your BIM model. They will be updated whenever the RVT file is modified.



Embedded IFC List

List and select networks that were embedded with the «Embed IFC» command.



Team Viewer

TeamViewer module for our Hotline and Training teams to provide assistance.



Links Management

Manage linked and imported files (.DWG - .IFC - .RVT - ...)



Save RVT

Embed your networks into a blank model and save it as RVT* to share it with your clients and collaborators who use REVIT.

*Not structured in systems.